

Journal of Aquaculture Engineering and Fisheries Research

E-ISSN 2149-0236

ORIGINAL ARTICLE/ORIJİNAL ÇALIŞMA

FULL PAPER

TAM MAKALE

DETERMINATION OF SOME HEMATOLOGICAL PARAMETERS AND NON-SPECIFIC IMMUNE RESPONSES IN *Garra rufa* (HECKEL, 1843) LIVING IN KANGAL (SİVAS) BALIKLI ÇERMİK THERMAL HOT SPRING AND TOPARDIÇ STREAM (SİVAS)

Selçuk Duman¹ ORCID ID: [0000-0002-6771-3385](https://orcid.org/0000-0002-6771-3385), Aysel Şahan² ORCID ID: [0000-0001-8000-8923](https://orcid.org/0000-0001-8000-8923)

¹ Cukurova University, Imamoglu Vocational School, Department of Fisheries, Adana, Turkey

² Cukurova University, Fisheries Faculty, Balcalı-Sarıçam, Adana, Turkey

Received: 19.08.2016

Accepted: 27.02.2017

Published online: 18.06.2017

Corresponding author:

Selçuk DUMAN, Cukurova University, Imamoglu Vocational School, Department of Fisheries, 01700, Imamoglu-Adana, Turkey

E-mail: sduman@cu.edu.tr

Abstract:

In this study, *Garra rufa* Heckel, 1843 (popularly known as doctor fishes), which is a fatty fish species living in Kangal Balıklı Çermik Thermal Hot Springs and Topardıç Stream mixing with these hot spring waters, was investigated. Hematological and non-specific immune parameters were investigated by comparing each environment in terms of seasons and each season in terms of environments. The amount of erythrocyte (RBC) and leukocyte (WBC) in the stream was found to be increased in summer and decreased in winter. On the other hand, no seasonal differences were observed in the pools due to the thermal water. Hb, Hct, monocyte, neutrophil, phagocytic activity values were found to be low in the winters and high in the summers in the stream whereas no changes were observed in the pools. No difference was found between seasons and environments in terms of the amount of eosinophil cells. Lymphocyte and MCV levels in the stream were found to be increased in winter and decreased in summer. No change was observed in the pools. Seasonal and environmental no difference was observed in MCH values of both pools and the stream, whereas MCHC values in the stream were found to be high in summer and low in winter. In the research, differences in winter and summer seasons and effects of different environments in these values were investigated.

Keywords: *Garra rufa*, Kangal Balıklı Çermik Thermal Hot Springs, Hematology, Non-Specific Immunity

JOURNAL OF AQUACULTURE ENGINEERING AND FISHERIES RESEARCH
E-ISSN 2149-0236

3(3): 108-115 (2017) doi: 10.3153/JAEFR17014

© 2015-2017 ScientificWebJournals (SWJ)

Introduction

Hematological parameters are very important in determining health and physiological status of the fish (Clauss et al., 2008; Adeyemo et al., 2009). In addition, these parameters reflect the changes in the organism correctly and play an important role in the detection of disease and metabolism of fish living in different ecological environments (Clarence and Hickey, 1982; Cengizler and Şahan, 2000). Hematological and immunological values are considered important criteria for fish health (Siwicki et al., 1994). Fishes are poikilothermic creatures, in which changes are observed in hematological parameters due to environmental factors such as bacteria, parasites, water temperature, oxygen content, pH and so on. Hematological values in fish changes with the effects of seasonal variations that are associated with changes in water temperature and climatic changes (Atamanalp and Yanık, 2003).

In this study, *Garra rufa* (Heckel, 1843) fish species living in Kangal Balıklı Çermik Thermal Hot Spring (Sivas) and Topardıç Stream (Sivas) and their hematological and non-specific immune parameters were investigated by comparing each environment in terms of seasons and each season in terms of environments. Within the scope of the study, hematological parameters such as red blood cells count (RBC), mean corpuscular volume (MCV), mean hemoglobin concentration (MCH), mean corpuscular hemoglobin concentration (MCHC), white blood cell count (WBC), hemoglobin (Hb) and hematocrit (Hct) amounts were analyzed. In addition, non-specific immune parameters such as phagocytic cell activity, monocyte, lymphocyte, eosinophil and neutrophil cells were discussed. The results of the mentioned parameters were evaluated in a comparative manner for summer (June, July and August) and winter (December, January, February) months in terms of the fishes living in Kangal Balıklı Çermik Thermal Hot Spring and Topardıç Stream. This study mainly aims to reveal some unknown hematological parameters and non-specific immune response characteristics of the doctor fish (*Garra rufa*) living in Balıklı Çermik Thermal Hot Spring and Topardıç Stream which are known to host a quest for finding health in the history of humanity.

Materials and Methods

Kangal Balıklı Çermik Thermal Hot Springs is located 13 km in the north-east direction of Kangal district which is 90 km away from Sivas province

(Özer et al., 1987). There are pools flowing with hot thermal waters and these waters in pools mix with Topardıç Stream in a distance of 100 meters (Duman and Şahan, 2014). The pH value of the isothermal water is about 7.2 and its temperature ranges between 35 °C – 36 °C throughout the year (Özer et al., 1987). In the research, fishes were obtained from thermal pools and 500 meters away from the stream where pools are discharged into the stream. A total of 180 *Garra rufa* fishes were used during the research. Temperature and amount of oxygen in the pools and stream was measured and weight, total length and age of the fishes were determined. These measurements were taken in both winter and summer seasons on a monthly basis and average values are given for these seasons. Peterson method is used for determining the age of the fish in the pools (Akbulut et al., 2008). During sampling, no gender discrimination was made and the fish were taken from each environment randomly. These fishes collected from pools are fatty fish species (*Garra rufa*) adapted to hot environments (Timur et al., 1983; Demirsoy, 1993; Gözükara and Çavaş, 2004). Ectoparasites and bacteriological examination were realized in fish. Blood samples were collected from caudal vein of the fishes with an injector by using an anesthetic agent (MS-222) (Imanpoor et al., 2010).

In the research, Cyanmethemoglobin method was used for determination of hemoglobin amount (Blaxhall and Daisley, 1973; Tanyer, 1985) “Microhematocrit Technique” was employed for determination of Hct (Blaxhall and Daisley, 1973; Konuk, 1981; Şahan and Cengizler, 2002). The blood samples collected from caudal vein of fishes for determination of “leukocyte cell formulas” were spread on a slide with the help of another slide. These samples were examined under a light microscope at x100 magnification by using May-Grünwald and Giemsa staining methods. All areas in each preparation were scanned and percentage of leukocyte cells (monocyte, lymphocyte, neutrophil, eosinophil) were determined by counting a total of 100 leukocyte cells (Şahan and Cengizler, 2002; Dorafshan et al., 2008). The cells were counted on a thoma slide for determination of erythrocyte and leukocyte cells by using Natt-Herrick solution (Arnold, 2005). The erythrocyte indices were calculated according to the following formula:

$$\text{Mean Corpuscular Volume (MCV)} (\mu^3) = \text{Hct} (\%) \div \text{RBC} (10^6 / \text{mm}^3) \times 10$$

Mean Hemoglobin Concentration (MCH) (pg) = $\text{Hb (g/100 mL)} \div \text{RBC (10}^6/\text{mm}^3) \times 10$

Mean Corpuscular Hemoglobin Concentration (MCHC) (%) = $\text{Hb (g/100mL)} \div \text{Hct (%)} \times 10$ (Kocabatmaz and Ekingen, 1984).

The phagocytosis experiment is based on spectrophotometric measurement principle of phagocytosed levels of yeast cells stained with Congo red by leukocytes. Histopaques are sodium diatrizoate and polysucroz solutions with a density of 1.077 ± 0.001 g/mL and 1.119 ± 0.001 g/mL, respectively. Histopaque 1.119 (Sigma) and Histopaque 1.077 (Sigma) containing hemagglutination buffer solution that will from layers is added to siliconized tubes. Then, 1 ml blood is carefully added to the tubes in the form of layers. Samples (500 g) were centrifuged for 15 minutes (4°C) and leukocytes were separated carefully. Then cells washed twice in HBSS (Hanks Balanced Salt Solution, Sigma) and adjusted to 2×10^6 viable cells ml^{-1} . 250 ml leukocyte solution was mixed with 500 ml yeast cell suspension that was autoclaved and stained with Congo red (yeast cells/leukocyte count: 40/1). This mixture was incubated for one hour at room temperature and then 1 mL HBSS was added to the mixture and 1 mL Histopaque 1.077 (Sigma) to the bottom part of the mixture. Samples were centrifuged at 850 g for 5 minutes in order to separate leukocytes from yeast cells.

The resulting leukocytes were washed twice with HBSS and stored at 37°C for 12 hours after mixing with 1 ml trypsin EDTA solution (5.0 g/L trypsin and 2.0 g/L EDTA, Sigma). Trypsin-EDTA was measured as 510 nm at the spectrophotometer (Jeney et al., 1997; Şahan and Duman, 2010; Duman and Şahan, 2014).

SPSS 10.0 software was used for statistical analyses. The differences between experimental groups and significance levels of these differences were determined by One-Way ANOVA – Tukey Test ($P < 0.05$ $P > 0.05$) (Hayran and Özdemir, 1995).

Results and Discussion

Total length, weight and age data of fishes collected from pools and the stream are presented in Table 1; oxygen amounts and temperature values are presented in Table 2; RBC, Hb, Hct, MCV, MCH, MCHC, WBC, lymphocytes, monocytes, neutrophils, eosinophils and phagocytic activity values of *Garra rufa* are given in Table 3 and other properties of thermal hot spring water are presented in Table 4, respectively. In addition, pictures of erythrocyte, lymphocyte, monocyte and neutrophil obtained from this Cyprinidae species are shown in Figure 1, 2 and 3. No findings were found in the bacteriological and parasitological examinations of the examined fish.

Table 1. Total length, weight and age *Garra rufa*'s in the stream and pools

<i>Garra rufa</i>	Winter ($\bar{X} \pm \text{SD}$)		Summer ($\bar{X} \pm \text{SD}$)	
	Pool	Stream	Pool	Stream
Total length (cm)	11.82 ± 0.49	12.19 ± 0.72	11.55 ± 0.76	11.78 ± 1.15
Weight (g)	15.96 ± 1.89	16.71 ± 1.51	17.33 ± 1.29	16.64 ± 1.97
Age (year)	3	3	3	3
$\bar{X} \pm \text{SD}$: Mean value \pm Standard deviation				

Table 2. Oxygen and temperature levels in stream and pools

	Winter ($\bar{X} \pm \text{SD}$)		Summer ($\bar{X} \pm \text{SD}$)	
	Pool	Stream	Pool	Stream
Oxygen (mg/L)	5.1 ± 0.15	11.6 ± 0.35	4.9 ± 0.16	5.8 ± 0.40
Temperature ($^\circ\text{C}$)	35.3 ± 0.36	10.3 ± 0.60	35.1 ± 0.20	31.6 ± 1.45
$\bar{X} \pm \text{SD}$: Mean value \pm Standard deviation				

Table 3. RBC, Hb, Hct, MCV, MCH, MCHC, WBC, lymphocyte, monocyte, neutrophil, eosinophil, and phagocytic activity values of *Garra rufa*

	Winter (X ± SD)		Summer (X ± SD)	
	Pool	Stream	Pool	Stream
RBC (x10 ⁶ /mm ³)	1.97 ±0.34 ^a	1.22 ±0.24 ^b	1.91 ±0.41 ^a	1.88 ±0.36 ^a
Hb (g / dL)	7.38 ±0.56 ^a	5.58 ±0.70 ^b	7.71 ±0.34 ^a	7.83 ±0.81 ^a
Hct (%)	41.89 ±0.57 ^a	34.91 ±0.58 ^b	42.12 ±0.93 ^a	39.62 ±1.64 ^c
MCV (μ ³)	219.8 ±48.7 ^a	298.1 ±72.7 ^b	231.8 ±62.2 ^a	219.3 ±50.7 ^a
MCH (pg)	38.7 ±9.1 ^a	47.2 ±10.6 ^b	42.1 ±10.0 ^a	43.3 ±10.9 ^a
MCHC (%)	17.6 ±1.31 ^a	15.9 ±1.99 ^b	18.3 ±0.88 ^a	19.8 ±2.20 ^c
WBC(x10 ³ /mm ³)	3.80 ±0.19 ^a	2.39 ±0.07 ^b	3.76 ±0.07 ^a	3.77 ±0.11 ^a
Lymphocyte (%)	64.8 ±0.63 ^a	76.0 ±0.62 ^b	64.7 ±0.47 ^a	67.7 ±0.50 ^c
Monocyte (%)	21.9 ±0.51 ^a	16.9 ±0.58 ^b	23.7 ±0.77 ^a	22.9 ±0.59 ^a
Neutrophil (%)	10.3 ±0.98 ^a	6.5 ±1.18 ^b	10.9 ±0.73 ^a	11.9 ±0.51 ^c
Eosinophil (%)	1.78 ±0.54 ^a	1.87 ±0.48 ^a	2.03 ±0.55 ^a	1.86 ±0.51 ^a
Phagocytic activity (O.D. 510 nm)	0.45 ±0.02 ^a	0.36 ±0.01 ^b	0.44 ±0.02 ^a	0.47 ±0.01 ^c

X ± SD: Mean value± Standard deviation. Different letters in averages means statistical difference (p<0.05).

Table 4. Other properties of thermal hot spring water (Timur et al., 1983)

Properties	Values
Appearance	Limpid
Smell	None
Taste	None
Color	Typical
Turbidity	None
Ph	7.8
Hardness (F.S.°)	26
Organic matter (p.p.m.)	0
Ca+Mg (mg/l)	80+14
Cl ₂	0
NH ₃	None
NO ₂	None
NO ₃	None

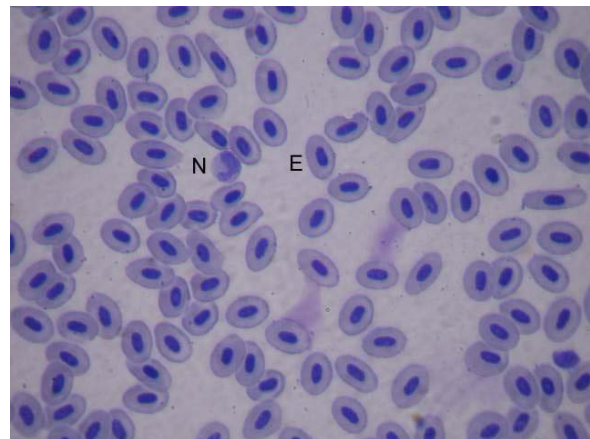


Figure 2. Blood cells of *Garra rufa* (E: Erythrocyte, N: Neutrophil), May-Grunwald Giemsa x100

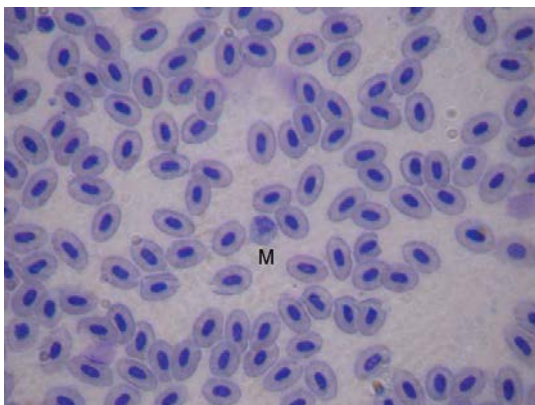


Figure 1. Blood cells of *Garra rufa* (M: monocyte), May-Grunwald Giemsa x100

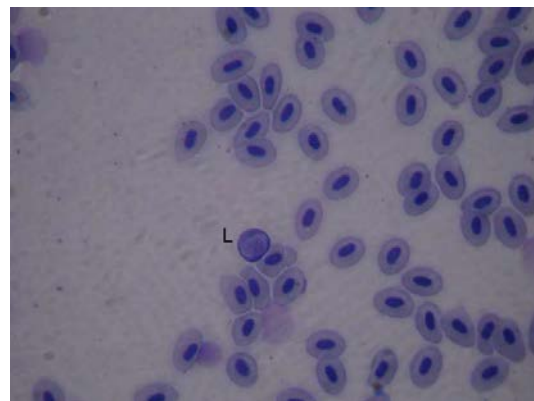


Figure 3. Blood cells of *Garra rufa* (L: Lymphocyte), May-Grunwald Giemsa x100

In summer, there was no statistically significant difference between RBC, Hb, MCV, MCH, WBC, monocyte, eosinophil levels of fishes collected from pools and the stream; while there was an increase in the MCHC, lymphocyte, neutrophil and phagocytic activity values and decrease in the Hct values of the fishes in the stream compared to those in the pools.

On the other hand, in winter, there was decrease in RBC, Hb, Hct, MCHC, WBC, monocyte, neutrophil and phagocytic activity levels and an increase in MCV, MCH and lymphocyte values of the fishes in the stream compared to those in the pools. No differences were determined in terms of eosinophil.

In the comparison between the fish in the pool in summer and winter seasons; statistically no significant differences were determined in RBC, Hb, Hct, MCV, MCH, MCHC, WBC, lymphocyte, monocyte, neutrophil, eosinophil and phagocytic activity levels.

As a result of the comparisons of fishes living in the stream in summer and winter seasons; RBC, Hb, Hct, MCHC, WBC, monocyte, neutrophil, phagocytic activity levels of *Garra rufa* fishes were found to be increased in summer and decreased in winter; whereas MCV, MCH and lymphocyte values were found to be decreased in summer and increased in winter, respectively. There was no difference in the level of eosinophil.

The presence of thermal water in the pools made the pool water unaffected from the seasonal changes, however the water in the stream being not thermal originated has caused differences on the hematological and immunological parameters of the fish. The difference between water temperatures, the change in oxygen levels, increased metabolic activities and increased energy demand caused an increase in the amount of RBC in the summer. According to the results of earlier studies, these changes are caused by seasonal differences between water parameters, oxygen-carrying capacity of blood depends on water temperature and therefore, changes in water temperature have effects on erythrocyte cells (Nanba et al., 1987; Örün et al., 2003; Aras et al., 2008). Living conditions of the fishes and oxygen levels in different environments as well as water temperature changes are observed to have effects on Hb, Hct, MCV, MCH and MCHC amounts. Similar studies shows a changing trend in MCH and MCHC values with temperature. Researchers have identified

higher MCV values and winter and lower values in summer. These differences are considered to be caused by environmental changes such as changes in water temperature and oxygen levels (Siwicki et al., 1994; Yılayaz and Bitmiş, 2002; Ginneken et al., 2007; Dias et al., 2008; Arnaudova et al., 2008). There is a proportionally relationship between RBC and these parameters. These changes are considered to be associated with increases and decreases in the amount of RBC. Hct, Hb, RBC and WBC values were determined to be decreased due to the decline of water temperature and this finding is supported by other researchers (Grigg, 1969; Leard et al., 1998; Rambhaskar and Rao, 2006). In the related studies, it has been reported that seasonal changes in water temperature cause differences in the non-specific immune response parameters of fishes (Yılayaz and Bitmiş, 2002; Örün et al., 2003). These studies suggest that there are different values in different seasons. In our study, the increase in lymphocyte percentages starting in the winter months were followed by the decrease during summer months, it was found that there were differences in monocyte and neutrophil percentages based on the cold and warm seasons and they reached the maximum in the summer. The percentage of eosinophil was found to be almost zero and no seasonal or environmental changes were seen in the percentage of eosinophil for the species included in the study. Although the number of studies related to this field is very limited, researchers reported similar results (Morvan et al., 1998; Swain et al., 2007; Kortet and Vainikka, 2008). In our study, phagocytic cells were found to be increased in spring and summer seasons when the water temperature also increased, and we have found that there was a decline in the phagocytic activities due to the immune suppression of the fishes at lower temperatures. This finding is in line with similar studies and phagocytic activity is found to be at highest in summer and at lowest in winter, respectively. They have determined that this is associated with the response created by immune system of the fish with increased microbial capacity in the water due to the higher water temperature in summer (Collazos et al., 1995; Kortet and Vainikka, 2008). In the present research, it was observed that the water temperature has effects on the leukocytes and seasonal changes in the water temperature positively affect WBC. In the earlier studies, increased metabolic activity, reduced oxygen level and increased energy demand caused by increased water temperature are reported to be main reasons of these

changes (Yılayaz and Bitmiş, 2002; Akmirza and Tepecik, 2007).

Conclusion

It was thought that, with the increase in the micro-biological activity in the warming waters in the summer and the increase in the microorganism density in the water, the immunological responses by the fish had an effect on these changes. The previous study results on this subject were found to be in line with the results obtained in our study.

Acknowledgements

This article produced from some part of PhD science thesis and supported by Cukurova University Scientific Research Projects Unit. (Project No: FBE2006D7)

References

- Adeyemo, O.K., Okwilagwe, O.O. & Ajani, F. (2009). Comparative assessment of sodium edta and heparin as anticoagulants for the evaluation of haematological parameters in cultured and feral African catfish (*Clarias gariepinus*). *Brazilian Journal of Aquatic Science and Technology*, 13(1), 19-24.
- Akbulut, K., Zengin, U., Gönek, Ü. & Bakır, M. (2008). *Balıklarda yaş tayini yöntemleri ve önemi*. Erzincan Üniversitesi Aquaclub Su Ürünleri Araştırma ve Geliştirme Bilim Kulübü Kemaliye 5. Geleneksel Su Ürünleri Bilimsel ve Kültürel Platformu, Kemaliye, Erzincan.
- Akmirza, A. & Tepecik, R.E. (2007). Seasonal variation in some haematological parameters in naturally infected and uninfected roach (*Rutilus rutilus*) with *Cryptobia tincae*. *Journal of Applied Biological Sciences*, 1(3), 61-65.
- Aras, M., Bayır, A., Sirkecioğlu, A.N., Polat, H. & Bayır, M. (2008). Seasonal variations in serum lipids, lipoproteins and some haematological parameters of chub (*Leuciscus cephalus*). *Italian Journal of Animal Science*, 7, 439-448.
- Arnaudova, D., Arnaudova, A. & Tomova, E. (2008). Selected hematological indices of freshwater fish from studen kladenetsh reservoir. *Bulgarian Journal of Agricultural Science*, 14(2), 244-250.
- Arnold, J.E. (2005). Hematology of the sandbar shark, *Carcharhinus plumbeus* standardization of complete blood count techniques for elasmobranchs. *Veterinary Clinical Pathology*, 34, 115-123.
- Atamanalp, M. & Yanık, T. (2003). Alterations in hematological parameters of rainbow trout (*Oncorhynchus mykiss*) exposed to mancozeb. *Turkish Journal of Veterinary and Animal Sciences*, 27, 1213-1217.
- Blaxhall, P.C. & Daisley, K.W. (1973). Routine haematological methods for use with fish blood. *Journal of Fish Biology*, 5(6), 771-781.
- Cengizler, İ. & Şahan, A. (2000). Seyhan Baraj Gölü ve Seyhan Nehrin de yaşayan aynalı sazdan (*Cyprinus carpio*, Linnaeus, 1758)'larda bazı kan parametrelerinin belirlenmesi. *Turkish Journal of Veterinary and Animal Sciences*, 24, 205-214.
- Clauss, T.M., Alistair, D.M. & Arnold, J.E. (2008). Hematologic disorders of fish. *Veterinary Clinics of North America: Exotic Animal Practice*, 11(3), 445-462.
- Clarence, R. & Hickey, J.R. (1982). Comparative hematology of wild and captive cunners. *Transactions of the American Fisheries Society*, 111, 242-249.
- Collazos, M.E., Barriga, C. & Ortega, E. (1995). Seasonal variations in the immune system of the cyprinid *Tinca tinca* phagocytic function. *Comparative Immunology, Microbiology and Infectious Diseases*, 18(2), 105-113.
- Demirsoy, A. (1993). *Yaşamın Temel Kuralları (Omurgalılar/Anamniyota)*. Cilt-III/Kısım-I, 38, 387, Hacettepe Üniversitesi Yayınları, Ankara.
- Dias, M.T., Affonso, E.G., Oliveria, S.R., Marcon, J.L. & Egami, M.I. (2008). Comparative study on hematological parameters of farmed matrinxa, *Brycon amazonicus* spix and agassiz, 1829 (Characidae: Bryconinae) with others bryconinae species. *Acta-Amo-zanica*, 38(4), 799-806.
- Duman, S. & Şahan, A. (2014). Kangal (Sivas) Balıklı Çermik Termal Kaplıcası İle Topardıç Deresi'nde (Sivas) Yaşayan Benekli Sazan *Cyprinion macrostomus* (Heckel, 1843) de Bazı Hematolojik Parametreler ve

- Non-Spesifik İmmün Yanıtın Belirlenmesi. *Yunus Araştırma Bülteni*, 4, 21-28.
- Dorafshan, S., Kalbassi, M.R., Pourkazemi, M., Amiri, B.M. & Karimi, S.S. (2008). Effects of triploidy on the caspian salmon *Salmo trutta caspius* haematology. *Fish Physiology and Biochemistry*, 34(3), 195-200.
- Ginneken, V.V., Durif, C., Balm, S.P., Boot, R., Verstegen, M.W.A., Antonissen, E. & Thil-lart, G.V.D. (2007). Silvering of european ell (*Anguilla anguilla* L.) seasonal changes of morphological and metabolic parameters. *Animal Biology*, 57(1), 63-77.
- Gözükara, S.A. & Çavaş, T. (2004). A karyological analysis of *Garra rufa* (Heckel, 1843) (Pisces, Cyprinidae) from the eastern Mediterranean River Basin in Turkey. *Turkish Journal of Veterinary and Animal Sciences*, 28, 497-500.
- Grigg, G.C. (1969). Temperature induced changes in the oxygen equilibrium curve of the blood of the brown bullhead, *Ictalurus nebulosus*. *Comparative Biochemistry and Physiology*, 28(3), 1203-1223.
- Hayran, M. & Özdemir, O. (1995). *Bilgisayar İstatistik ve Tıp*. Hekimler Yayın Birliği, Ankara.
- Imanpoor, M.R., Bagheri, T. & Hedayati, S.A.A. (2010). The anesthetic effects of clove essence in persian sturgeon, *Acipenser persicus*. *World Journal of Fish and Marine Sciences*, 2(1) 29-36.
- Jeney, G., Galeotti, M., Volpatti, D., Jeney, Z. & Anderson, D.P. (1997). Prevention of stress in rainbow trout (*Oncorhynchus mykiss*) fed diets containing different doses of glucan. *Aquaculture*, 154, 1-15.
- Kocabatmaz, M. & Ekingen, G. (1984). Değişik Tür Balıklarda Kan Örneği Alınması ve Hematolojik Metotların Standardizasyonu. *Doğa Bilim Dergisi*, 8, 149-159.
- Konuk, T. (1981). *Pratik Fizyoloji Ders Kitabı*, Ankara Üniversitesi Veteriner Fakültesi Yayınları. Ankara Üniversitesi Basımevi. Ankara.
- Kortet, R. & Vainikka, A. (2008). Seasonality of innate immunity; evolutionary aspects and latest updates. In M. Durand & C.V. Morel (Eds), *In New Research on Innate Immunity* (pp. 13-45). NY: Nova Science Publishers. ISBN 978-1-60456-549-2.
- Leard, A.T., Wanger, B.A., Camp, K.L., Wise, D.J. & Gao, X.D. (1998). Seasonal values of selected blood parameters of farm-raised channel catfish (*Ictalurus punctatus*) in the Mississippi Delta. *Journal of Veterinary Diagnostic Investigation*, 10, 344-349.
- Morvan, C.L., Troutaud, D. & Deschaux, P. (1998). Differential effects of temperature on specific and nonspecific immune defences in fish. *The Journal Experimental Biology*, 201, 165-168.
- Nanba, K., Kakuta, I., Uematsu, K. & Murachi, S. (1987). Annual changes in the osmolarity and inorganic ion level ratios between urine and plasma in carp *Cyprinus carpio*. *Nippon Suisan Gakkaishi: Bulletin of the Japanese Society of Scientific Fisheries*, 53 (6), 913-918.
- Örün, İ., Dörücü, M. & Yazlak, H. (2003). Hematological parameters of three cyprinid fish species from Karakaya Dam Lake, Turkey. *Online Journal of Biological Sciences*, 3(3), 320-328.
- Özer, Z., Akpınar, M.A., Akçay, M., Erdem, Ü., Güler, R., Yanıkoğlu, A., Ergenoğlu, B., Dere, Ş. & Savaşçı, Ş. (1987). Kangal Balıklı Kaplıcanın (Sivas) bazı kimyasal ve biyolojik özelliklerinin araştırılması. *Cumhuriyet Üniversitesi Fen Edebiyat Fakültesi Fen Bilimleri Dergisi*, 5, 1-34.
- Rambhaskar, B. & Rao, S.K. (2006). Comparative haematology of ten species of marine fish from Visakhapatnam Coast. *Journal of Fish Biology*, 30(1), 59-66.
- Siwicky, A.K., Anderson, D.P. & Rumsey, G.L. (1994). Dietary intake of immunostimulants by rainbow trout affects non-specific immunity and protection against furunculosis. *Veterinary Immunology and Immunopathology*, 41, 125-139.
- Swain, P., Dash, S., Sahoo, P.K., Gupta, S.D., Meher, P.K. & Sarangi, N. (2007). Nonspecific immune parameters of brood indian major carp *Labeo rohita* and their seasonal variations. *Fish & Shellfish Immunology*, 22(1)2, 38-43.
- Şahan, A. (2000). *Seyhan Nehri (Adana kent içi bölgesi) 'nde yaşayan bazı Cyprinid'lerde*

hematolojik arařtırmalar. PhD Thesis
Çukurova University. Adana.

- Şahan, A. & Cengizler, İ. (2002). Seyhan Nehri (Adana kent içi bölgesi)' nde yaşayan benekli siraz (*Capoeta barroisi* Lorted, 1894) ve kızılğöz (*Rutilus rutilus*, Linnaeus, 1758)' de bazı hematolojik parametrelerin belirlenmesi. Turkish Journal of Veterinary and Animal Sciences, 26, 849-858.
- Şahan, A. & Duman, S. (2010). Influence of β -1,3/1,6 glucan applications on some non-specific cellular immune response and hematologic parameters of healthy Nile tilapia (*Oreochromis niloticus* L., 1758). Turkish Journal of Veterinary and Animal Sciences, 34(1), 75-81.
- Tanyer, G. (1985). *Hematoloji ve Lobaratuvar Ders Kitabı*, Ayyıldız A.Ş., Ankara.
- Timur, M., Çolak, A. & Marufi, M. (1983). Balıklı Kaplıcadaki (Sivas) balık türlerinin tanımı ve deri hastalıkları tedavisindeki etkisinin araştırılması. *Ankara Üniversitesi Veterinerlik Fakültesi Dergisi*, 30(2), 276-282.
- Yılayaz, Ö. & Bitmiş, K. (2002). Keban Baraj Gölü'nde yaşayan *Barbus rajanorum mystaceus* (Heckel, 1843)' da kan parametrelerinin incelenmesi. *Gazi Üniversitesi Gazi Eğitim Fakültesi Dergisi*, 22(2), 11-21.